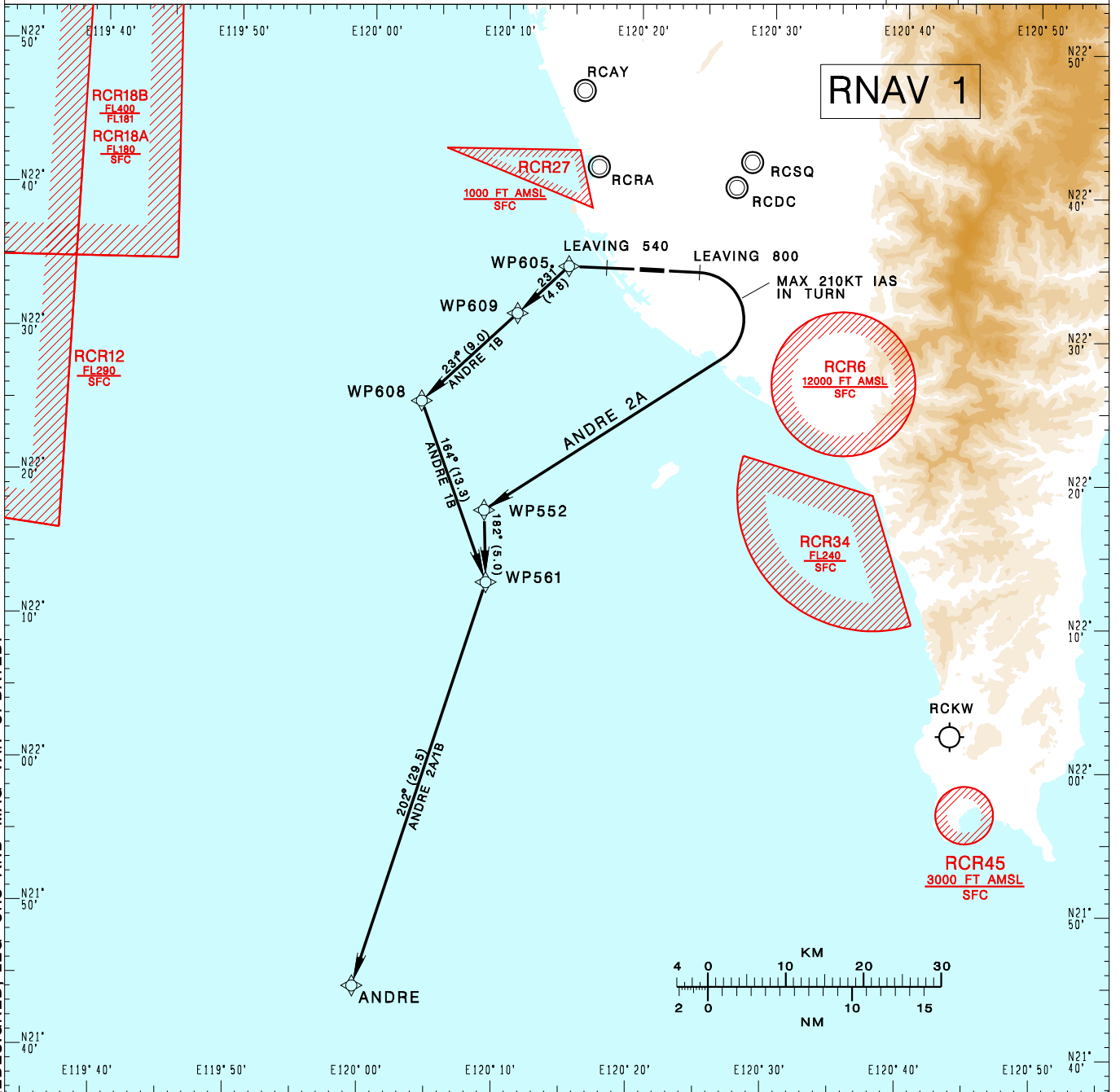


高雄國際機場
KAOHSIUNG INTL AD

RCKH SID
ANDRE 2A RNAV(RWY09)
ANDRE 1B RNAV(RWY27)

KAOHSIUNG APP 124.7 125.7	KAOHSIUNG TWR 118.7 120.7	ATIS 127.8	VAR 4°W-2023 12100' MSA ARP 25NM	
Apt Elev: 32'		Trans Level: FL130		Trans Alt: 11,000'
BEARINGS ARE MAGNETIC; DISTANCES ARE NAUTICAL MILES; ELEVATIONS, HEIGHTS IN FEET				



CHANGES: LEG BEFORE WP552 REDESIGNED: LEG CRS AND MAG VAR UPDATED.

ANDRE TWO ALFA RNAV DEPARTURE

Climb on RWY HDG until 800ft, then turn right direct to WP552 then to WP561, ANDRE. Cross WP552 at or below 7,000ft.

ANDRE ONE BRAVO RNAV DEPARTURE

Climb on RWY HDG until 540ft, then direct to WP605, then to WP609, WP608, WP561, ANDRE. Cross WP609 at or below 8,000ft, cross WP561 at or below 9,000ft.

NOTE

- ANDRE 2A:
Minimum climb gradient required: 6.0%(365 ft/NM) until 2,000ft.
Speed restriction of 210KT IAS maximum until established on track to WP552.
- Caution: pier cranes, terrain and stacks east, west and south of the airport.
- ATS surveillance required.